



溯远基因
SUPERYEARS



General 2215 Real-Time PCR System

● Products features

◆ Integrated design

- 12-inch touch screen
- Built-in OS of Windows 10

◆ New design of light path

- Built-in ultra-high sensitivity CMOS image sensor
- Simultaneous imaging of 96-well plates to ensure accurate result

◆ Powerful operating software

- More applications allowed *

* Applications includes absolute quantitative, relative quantitative, gene expression analysis, allelic typing, negative/positive detection, high resolution melting curve (HRM) analysis.

◆ Faster to complete standard quantitative experiment

- 3D temperature control
- Maximum speed of temperature adjustment up to 5.5°C/s

◆ 5-color fluorescent dye to allow more applications

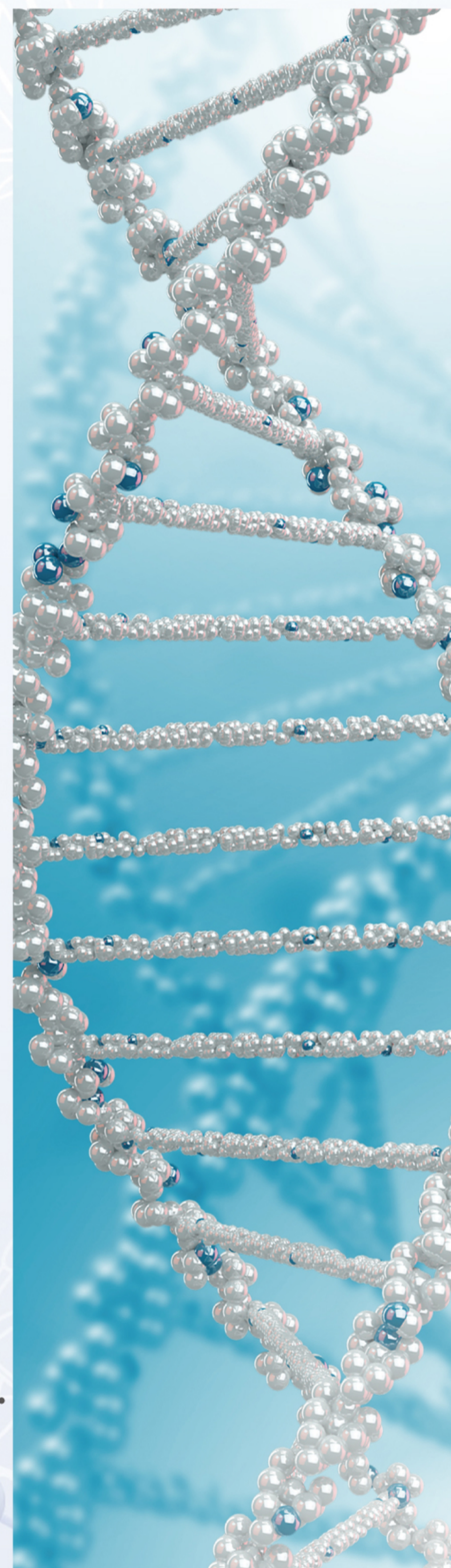
- Applicable to most variety of fluorescent dyes*
- Fluorescent dyes brands include FAM™/SYBR® Green I, VIC®/JOE, NED™/TAMRA™/ Cy3®, ROX™ / Texas Red® and Cy5

◆ Highly sensitive analysis results

- High Sensitivity: Up to 1 copy of human Gene
- High Reliability: 99.7% reliability of distinguishing between 5000 copies and 10000 copies
- Detection range: Up to 9 orders of magnitude

● Specifications & Parameters

- **Sample Capacity :** 96-well
- **Reaction Volume:** 10-30 μ l
- **Applicable consumables:** 0.1ml 96-well plate, 8-strip tube, single tube
- **Temperature control range:** 4-100 $^{\circ}$ C
- **Maximum temperature rise and fall speed:** 5.5 $^{\circ}$ C /S
- **Temperature accuracy:** \pm 0.5 $^{\circ}$ C
- **Temperature uniformity:** \pm 0.25 $^{\circ}$ C
- **Run Time:** 40 min
- **Temperature control method:** Peltier semiconductor
- **Light source:** Tungsten halogen lamp
- **Detector:** CMOS Image Sensor, Simultaneous imaging of 96-well plates
- **Sensitivity:** 1 copy of human Gene
- **Reliability:** 99.7% reliability of distinguishing between 5000 copies and 10000 copies
- **Detection Range:** Up to 9 orders of magnitude
- **Excitation light range:** 470-640nm
- **Detection light range:** 520-682nm
- **Filter system:** 5 sets of excitation filters, 5 sets of emission filters
- **Applicable fluorescent dyes:** FAM[™]/SYBR[®] Green I, VIC[®]/JOE , NED[™]/TAMRA[™]/ Cy3[®], ROX[™] / Texas Red[®] Cy5[®] ...
- **Dimension:** 400 \times 500 \times 585mm (L \times W \times H)
- **Weight:** 35kg



Nanjing Superyears Gene Technology Co., Ltd.

Add: 11/F, Block 3-2B, No. 88 Pubin Avenue, Jiangpu Street,
Pukou District, Nanjing

Tel: +86-25-57561788

Email: contato@superyears.com



 **溯远基因**
SUPERYEARS
www.superyears.com